

U.S. Army Public Health Center

Army Influenza Activity Report

Week ending 14 November 2020 (week 46)

Influenza Vaccination Coverage*

As of 18 November 2020

| | |
|-----|------------------|
| 48% | Army Active Duty |
| 47% | Army Guard |
| 66% | Army Reserve |

*Data Source: MEDPROS

Click to enlarge images.

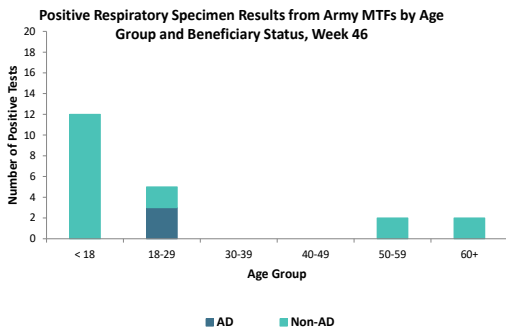
SUMMARY

Flu activity remains low in the Army population. The proportion of positive influenza A specimens for the Army in week 46 is 0.3%, which is lower than the historical average of 2.8% for the same time period; all regional health commands had a percent positive rate lower than their respective historical averages. No hospitalizations were reported in week 46; the season total thus far is three, compared to 12 influenza-related hospitalizations reported as of this time last season. Increased rhinovirus/enterovirus cases have been noted; this is likely attributable to a change in the type of test used to detect respiratory pathogens at a specific installation. Nation-wide, influenza activity is low with 0.2% influenza A positivity of specimens tested by clinical laboratories. With the upcoming holiday season, individuals should continue to practice social distancing, wear cloth face coverings, and wash hands to reduce the spread of respiratory illnesses.

GEOGRAPHIC SPREAD

Data on the geographical spread of influenza is unavailable this season due to the COVID-19 pandemic. For information from previous seasons and additional information about nationwide influenza surveillance, please visit the Centers for Disease Control and Prevention's website by clicking [here](#).

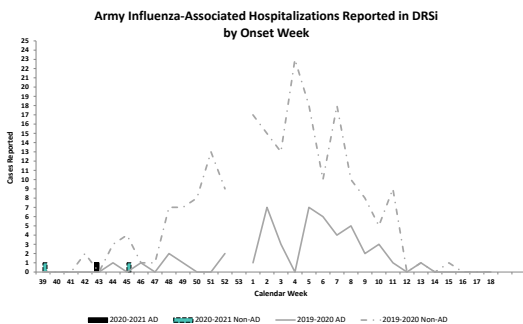
DEMOGRAPHICS



AD: Three positive respiratory specimens were collected from active duty (AD) Service members in week 46; all were from individuals 18 through 29 years of age.

Non-AD: Eighteen positive respiratory specimens were collected from non-AD individuals; 67% (n=12) were from those under 18 years of age.

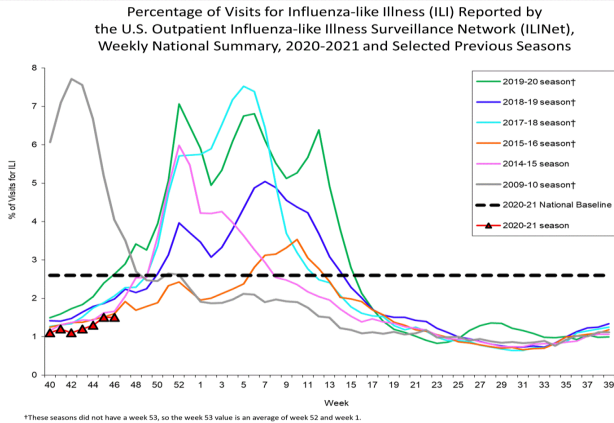
INFLUENZA-ASSOCIATED HOSPITALIZATIONS



No influenza-associated hospitalizations were reported to the Disease Reporting System internet (DRSi) in week 46; three hospitalizations have been reported for the entire season thus far. During the 2019-2020 season, two hospitalizations were reported in week 46, and 12 hospitalizations had been reported since the start of the season to week 46.

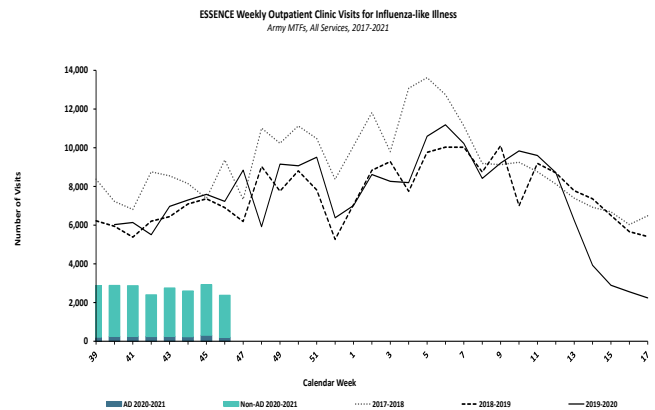
*DRSi does not capture cases older than 65 years old for influenza-associated hospitalizations.

ILI ACTIVITY - UNITED STATES

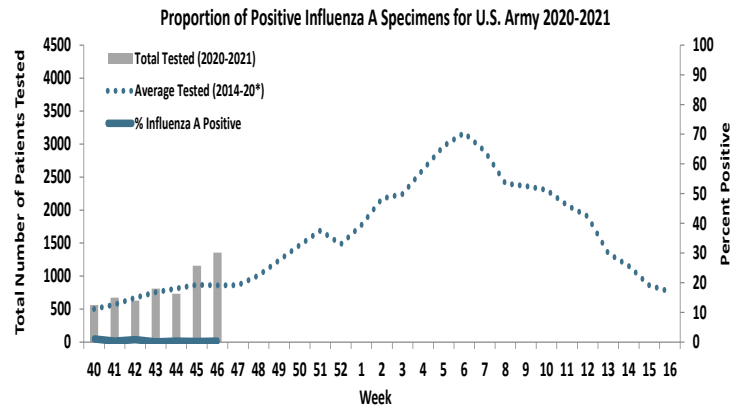
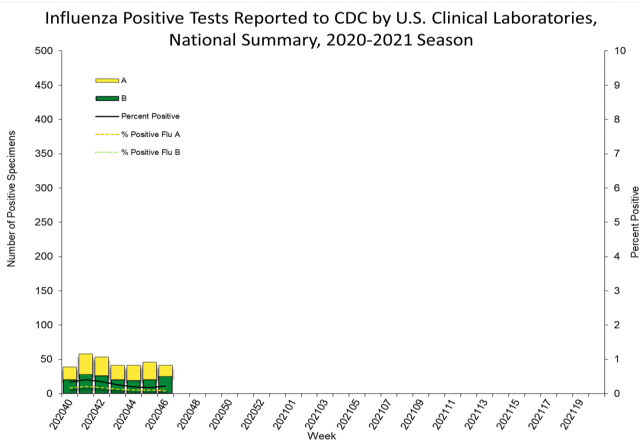


Nationwide in week 46, incident ILI activity was 1.5%; this is below the national baseline of 2.6%. At Army medical treatment facilities, incident ILI activity decreased by 19% from week 45 to week 46. The majority of ILI encounters (92%) were from non-AD patients in week 46.

ILI ACTIVITY - ARMY



LABORATORY RESPIRATORY SPECIMEN TESTING



Nationwide, 18,482 specimens were tested by clinical laboratories and submitted to CDC, of which 41 (0.2%) were positive. Influenza B accounted for 61% of the total positive specimens submitted to the CDC in week 46. In the Army population, 0.3% of 1,355 specimens tested for influenza A were positive in week 46. Three (75%) of the positive influenza A specimens were from non-AD individuals; RHC-C reported the majority (75%, n=3) of positive influenza A specimens.

| | | Week 43 | Week 44 | Week 45 | Week 46 | Season Total |
|--|---------------|--------------|--------------|--------------|--------------|---------------|
| Army MTF Laboratory Results, 2020-21 | Influenza A | 1 | 2 | 2 | 4 | 27 |
| | Influenza B | 4 | 3 | 1 | 1 | 26 |
| | Adenovirus | 5 | 5 | 2 | 2 | 27 |
| | Enterovirus | 4 | 5 | 3 | 12 | 37 |
| | Parainfluenza | 1 | 0 | 0 | 0 | 2 |
| | RSV | 4 | 3 | 0 | 2 | 15 |
| | Negative | 2,019 | 1,840 | 2,662 | 3,167 | 16,323 |
| | Total | 2,038 | 1,858 | 2,670 | 3,188 | 16,457 |

Of the 3,188 specimens tested in week 46, 1% (n=21) were positive for any type of respiratory illness. Rhinovirus/enterovirus accounted for 57% (n=12) of positive specimens, influenza A for 19% (n=4), adenovirus and respiratory syncytial virus (RSV) each accounted for 10% (n=2), and influenza B accounted for 5% (n=1).

Additionally, the reported number of specimens tested increased by 19% since week 45 (n=2,670).

Locations providing week 46 laboratory data as of 19 November 2020: Ft Belvoir, Ft Benning, Ft Bliss, Ft Bragg, Ft Campbell, Ft Carson, Ft Drum, Ft Gordon, Ft Hood, Ft Huachuca, Ft Jackson, Ft Knox, Ft Leavenworth, Ft Lee, Ft Leonard Wood, Ft Lewis, Ft Meade, Ft Polk, Ft Riley, Ft Rucker, Ft Sam Houston, Ft Sill, Ft Stewart, Ft Wainwright, Korea, Landstuhl Regional Medical Center, Redstone Arsenal, Tripler Army Medical Center, the U.S. Military Academy, and Walter Reed National Military Medical Center.

LABORATORY RESPIRATORY SPECIMEN TESTING DURING WEEK 46

| Region | Installation | Influenza A | | | Influenza B | | | Adenovirus | | |
|--------|-----------------------------------|-------------|------------|---------------------|-------------|------------|---------------------|------------|------------|---------------------|
| | | No. Tested | % Positive | Baseline % Positive | No. Tested | % Positive | Baseline % Positive | No. Tested | % Positive | Baseline % Positive |
| RHCA | Ft. Belvoir | 89 | 1.1 | 0 | 89 | 1.1 | 0 | 58 | 1.7 | 100 |
| | Ft. Benning | 27 | 0 | 0 | 27 | 0 | 3.3 | | | |
| | Ft. Bragg | | | 6.1 | 3 | 0 | 100 | | | |
| | Ft. Campbell | 39 | 0 | 0 | 39 | 0 | 1.4 | | | 100 |
| | Ft. Drum | 16 | 0 | 0 | 16 | 0 | | | | |
| | Ft. Gordon | 25 | 0 | 0 | 25 | 0 | 8.8 | 1 | 0 | 100 |
| | Ft. Jackson | 21 | 0 | 0 | 21 | 0 | 0 | | | |
| | Ft. Knox | 10 | 0 | 33.3 | 10 | 0 | 0 | | | |
| | Ft. Lee | 5 | 0 | 9.1 | 5 | 0 | | | | |
| | Ft. Meade | 1 | 0 | 0 | 1 | 0 | | | | |
| | Ft. Rucker | 45 | 0 | 0 | 45 | 0 | 12.5 | | | |
| | Ft. Stewart | 19 | 0 | 0 | 19 | 0 | 0 | | | |
| | Redstone Arsenal | 1 | 0 | 0 | 1 | 0 | 0 | | | |
| | U.S. Military Academy | 3 | 0 | 0 | 3 | 0 | 0 | | | 100 |
| RHCC | Ft. Bliss | 125 | 1.6 | 0 | 123 | 0 | 2.5 | | | 17.9 |
| | Ft. Carson | 102 | 0 | 2.9 | 22 | 0 | 100 | | | |
| | Ft. Hood | 80 | 0 | 1.1 | 80 | 0 | 28.9 | 6 | 0 | 0 |
| | Ft. Huachuca | 7 | 0 | 0 | 7 | 0 | 0 | | | |
| | Ft. Leavenworth | 13 | 0 | 0 | 13 | 0 | 0 | | | |
| | Ft. Leonard Wood | 84 | 0 | 0 | 84 | 0 | 0 | | | |
| | Ft. Polk | 47 | 0 | 0 | 47 | 0 | 100 | | | |
| | Ft. Riley | 55 | 1.8 | 4.2 | 55 | 0 | 0 | | | |
| | Ft. Sam Houston | 395 | 0 | 10.2 | 397 | 0 | 0 | | | 100 |
| | Ft. Sill | 37 | 0 | 0 | 37 | 0 | | | | |
| RHCE | Landstuhl Regional Medical Center | 77 | 0 | 0 | 77 | 0 | 0 | 77 | 1.3 | 0 |
| RHCP | Ft. Wainwright | 18 | 0 | 0 | 18 | 0 | 0 | | | |
| | Korea | 20 | 0 | 0 | 20 | 0 | 0 | | | 20 |
| | Tripler Army Medical Center | 32 | 0 | 6.6 | 32 | 0 | 2.4 | 31 | 0 | 0 |

| Region | Installation | Enterovirus | | | Parainfluenza | | | RSV | | |
|--------|-----------------------------------|-------------|------------|-----------------|---------------|------------|-----------------|------------|------------|-----------------|
| | | No. Tested | % Positive | Baseline % Pos. | No. Tested | % Positive | Baseline % Pos. | No. Tested | % Positive | Baseline % Pos. |
| RHCA | Ft. Belvoir | | | | 58 | 0 | 100 | 80 | 0 | 11.4 |
| | Ft. Campbell | | | | | | 100 | | | 100 |
| | Ft. Gordon | | | | 1 | 0 | 100 | 1 | 0 | 100 |
| | Ft. Stewart | | | | | | 100 | 3 | 0 | 23.8 |
| | U.S. Military Academy | | | | | | 100 | | | 100 |
| RHCC | Ft. Bliss | | | | | | | 10 | 0 | 9.1 |
| | Ft. Carson | | | | | | | 9 | 0 | 10.5 |
| | Ft. Hood | | | | 6 | 0 | 0 | 19 | 5.3 | 22.1 |
| | Ft. Polk | | | | | | | 3 | 0 | 25 |
| | Ft. Riley | | | | | | | 11 | 9.1 | 0 |
| | Ft. Sill | | | | | | | 3 | 0 | 0 |
| RHCE | Landstuhl Regional Medical Center | | | | 77 | 0 | 13.3 | 79 | 0 | 3.6 |
| RHCP | Ft. Wainwright | | | | | | | 17 | 0 | 0 |
| | Korea | | | 0 | | | 20 | | | 0 |
| | Tripler Army Medical Center | 30 | 40 | 0 | 32 | 0 | 2.4 | | | 100 |

No.: Number of specimens tested during MMWR week 46, 2020/2021 season.

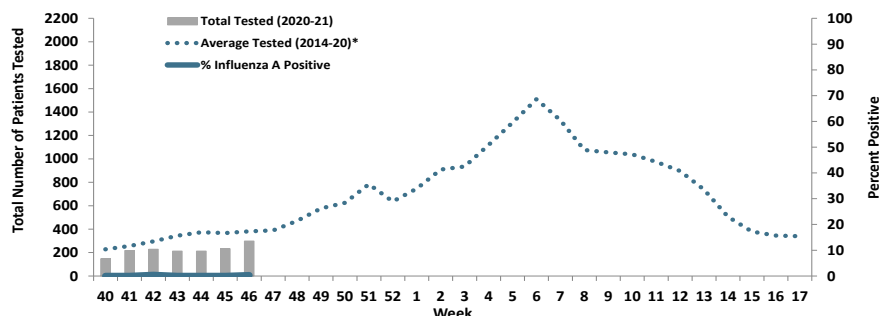
% Pos.: Percentage of positive specimens reported during MMWR week 46, 2020/2021 season.

Baseline % Pos.: Percentage of positive specimens reported in MMWR week 46 during influenza seasons from September 2012 - May 2020.

Missing values indicate that specimens were not tested for the disease during the week of interest.

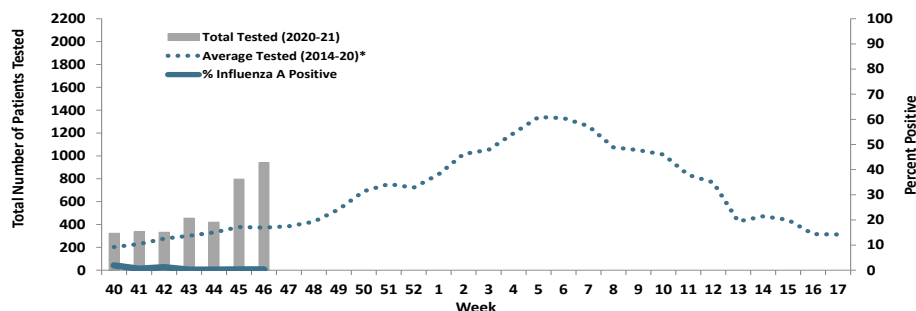
Proportion of Influenza A Positive Specimens by Week and Region, Army Medical Laboratories, 2020-2021 as Compared to 2014-2020*

Regional Health Command - Atlantic (RHC-A)



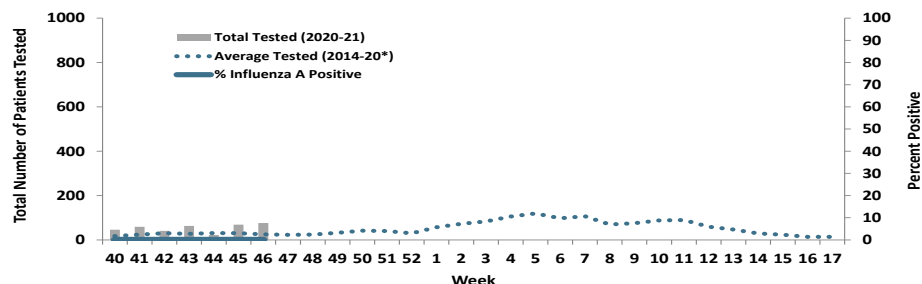
| Week 46 | | | |
|--------------|----------|----------|--------------|
| Age Group | AD | Non-AD | Season Total |
| < 18 | 0 | 0 | 0 |
| 18-29 | 0 | 0 | 1 |
| 30-39 | 0 | 0 | 0 |
| 40-49 | 0 | 0 | 0 |
| 50-59 | 0 | 0 | 0 |
| 60+ | 0 | 1 | 1 |
| Total | 0 | 1 | 2 |

Regional Health Command - Central (RHC-C)



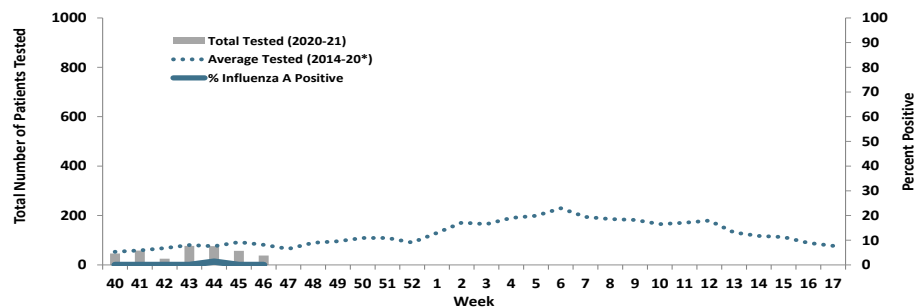
| Week 46 | | | |
|--------------|----------|----------|--------------|
| Age Group | AD | Non-AD | Season Total |
| < 18 | 0 | 1 | 6 |
| 18-29 | 1 | 0 | 9 |
| 30-39 | 0 | 0 | 5 |
| 40-49 | 0 | 0 | 1 |
| 50-59 | 0 | 1 | 2 |
| 60+ | 0 | 0 | 1 |
| Total | 1 | 2 | 24 |

Regional Health Command - Europe (RHC-E)



| Week 46 | | | |
|--------------|----------|----------|--------------|
| Age Group | AD | Non-AD | Season Total |
| < 18 | 0 | 0 | 0 |
| 18-29 | 0 | 0 | 0 |
| 30-39 | 0 | 0 | 0 |
| 40-49 | 0 | 0 | 0 |
| 50-59 | 0 | 0 | 0 |
| 60+ | 0 | 0 | 0 |
| Total | 0 | 0 | 0 |

Regional Health Command - Pacific (RHC-P)

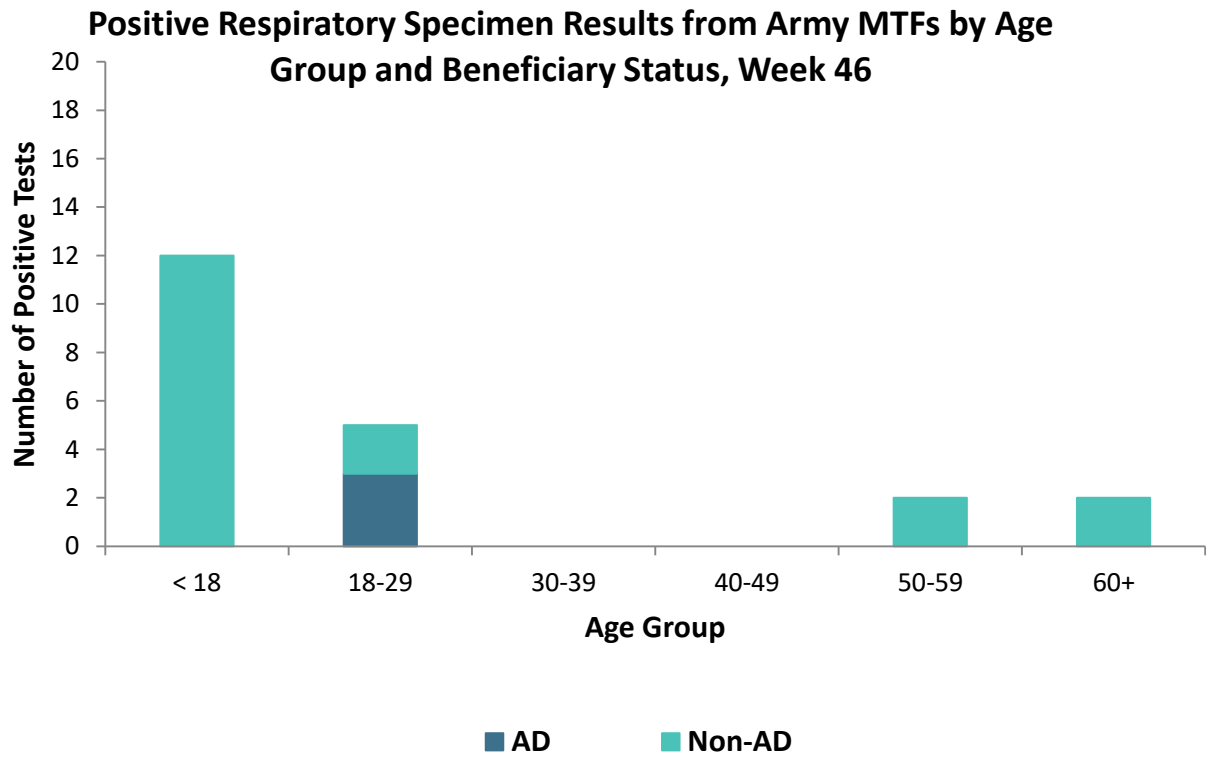


| Week 46 | | | |
|--------------|----------|----------|--------------|
| Age Group | AD | Non-AD | Season Total |
| < 18 | 0 | 0 | 1 |
| 18-29 | 0 | 0 | 0 |
| 30-39 | 0 | 0 | 0 |
| 40-49 | 0 | 0 | 0 |
| 50-59 | 0 | 0 | 0 |
| 60+ | 0 | 0 | 0 |
| Total | 0 | 0 | 1 |

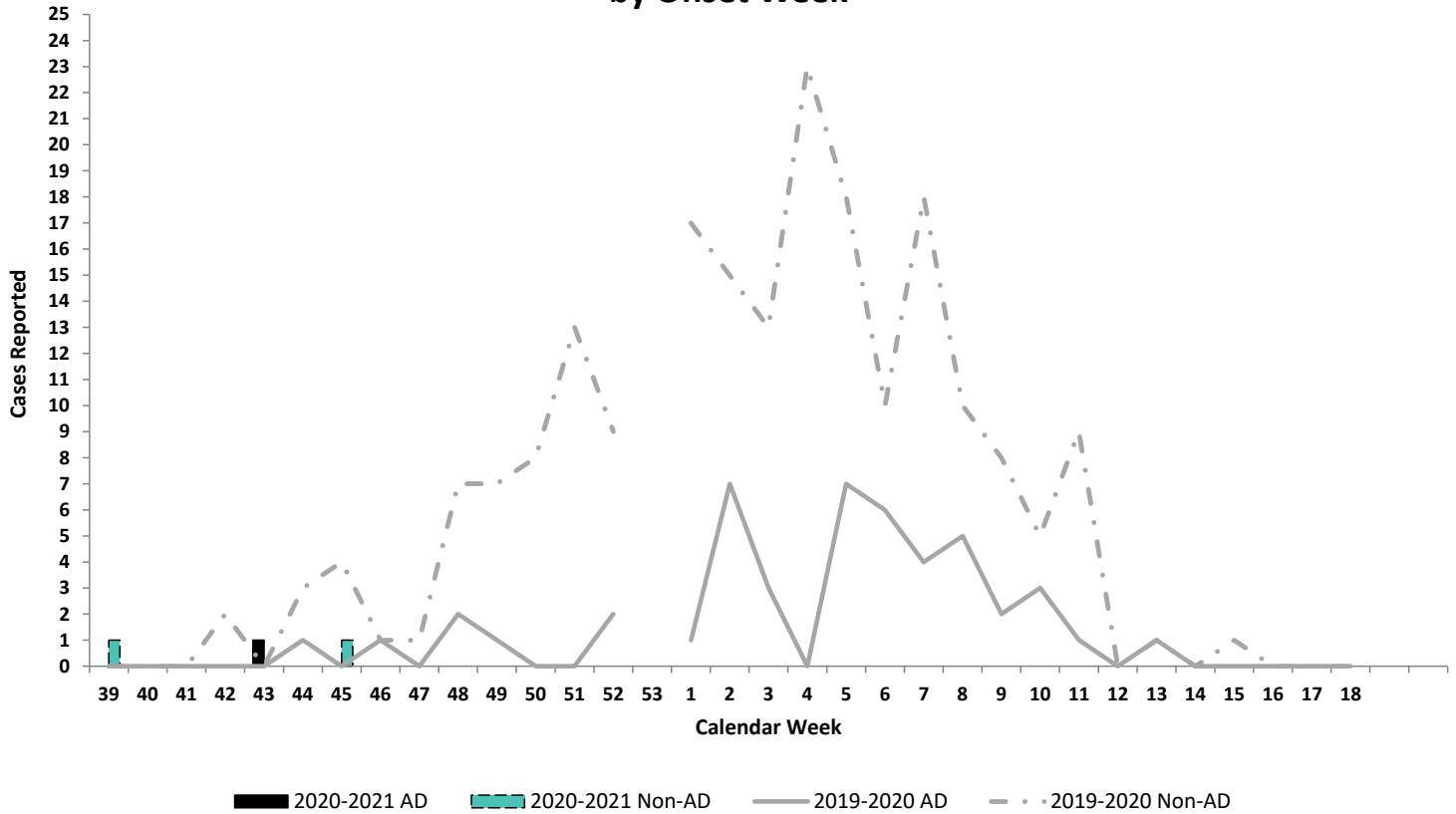
*2014/2015 influenza season - 2019/2020 influenza season

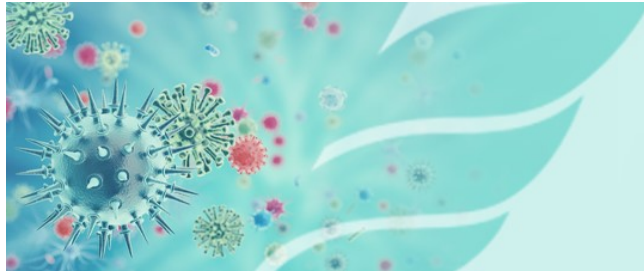
Number of Positive Influenza A Specimens by Region and Duty Status

| Region | Week 40 | | Week 41 | | Week 42 | | Week 43 | | Week 44 | | Week 45 | | Week 46 | |
|--------|---------|-----|---------|-----|---------|-----|---------|-----|---------|-----|---------|--------|---------|--------|
| | AD | NAD | AD | NAD | AD | NAD | AD | NAD | AD | NAD | AD | Non-AD | AD | Non-AD |
| RHC-A | 0 | 0 | 0 | 0 | 1 | 0 | 0 | 0 | 0 | 0 | 0 | 0 | 0 | 1 |
| RHC-C | 3 | 3 | 1 | 1 | 1 | 3 | 1 | 0 | 1 | 0 | 0 | 2 | 1 | 2 |
| RHC-E | 0 | 0 | 0 | 0 | 0 | 0 | 0 | 0 | 0 | 0 | 0 | 0 | 0 | 0 |
| RHC-P | 0 | 0 | 0 | 0 | 0 | 0 | 0 | 0 | 0 | 1 | 0 | 0 | 0 | 0 |



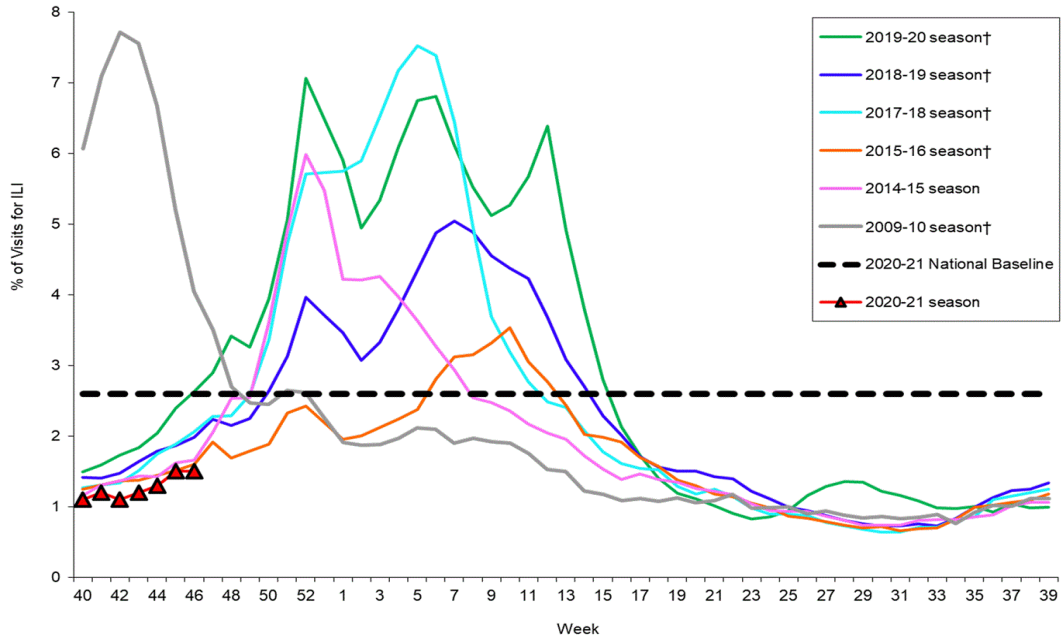
Army Influenza-Associated Hospitalizations Reported in DRSi by Onset Week





U.S. Army Public Health Center
Army Influenza Activity Report
 Week ending 14 November 2020 (week 46)

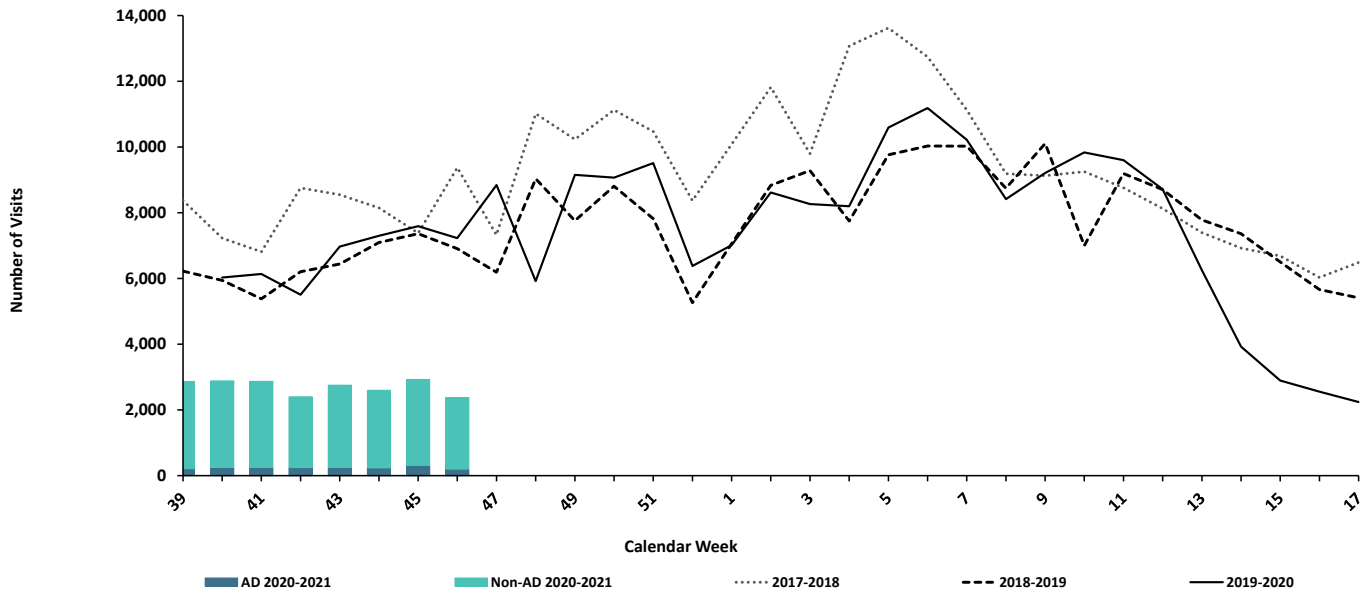
Percentage of Visits for Influenza-like Illness (ILI) Reported by the U.S. Outpatient Influenza-like Illness Surveillance Network (ILINet), Weekly National Summary, 2020-2021 and Selected Previous Seasons

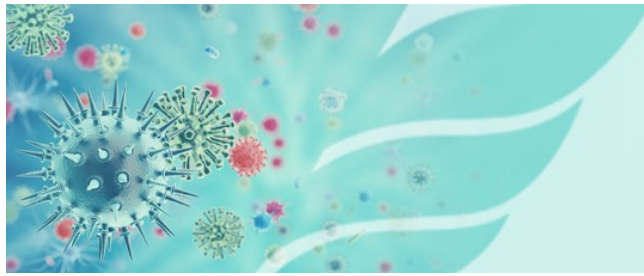


†These seasons did not have a week 53, so the week 53 value is an average of week 52 and week 1.

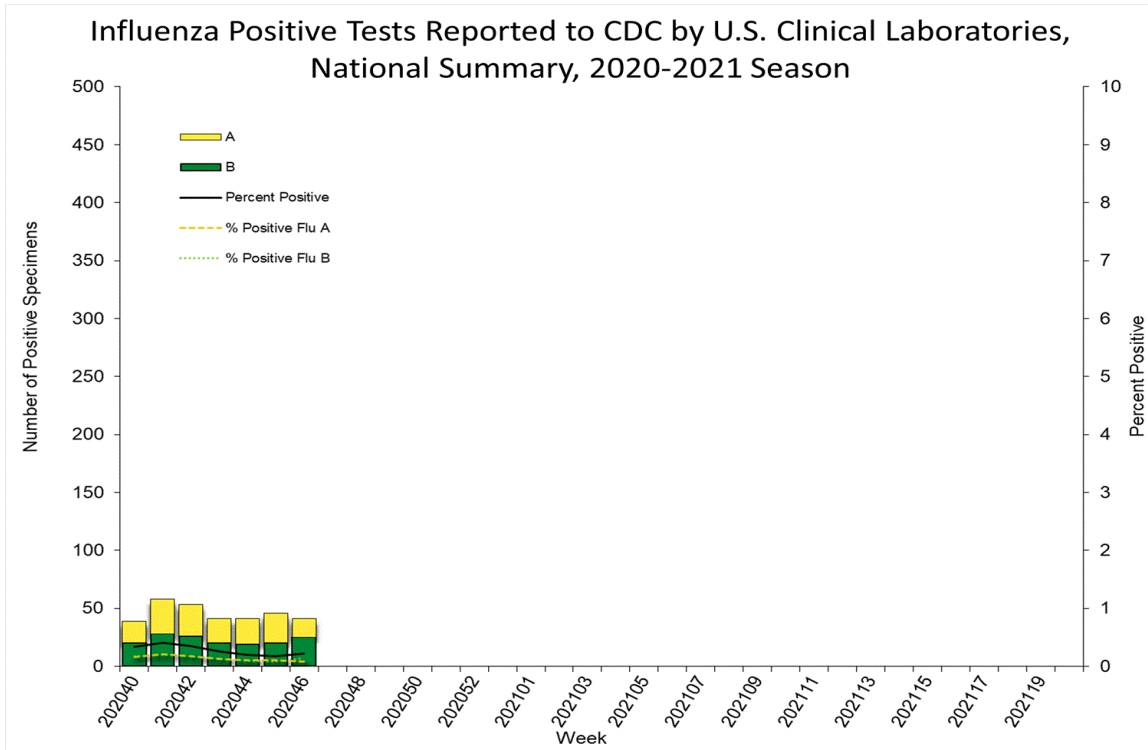


ESSENCE Weekly Outpatient Clinic Visits for Influenza-like Illness
Army MTFs, All Services, 2017-2021





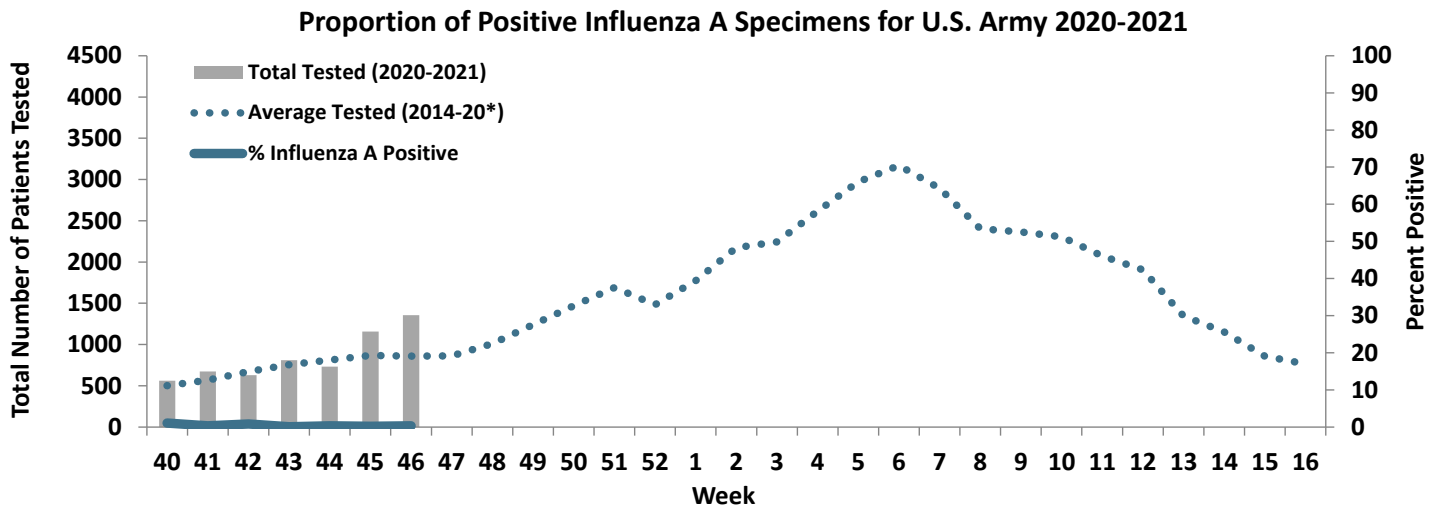
U.S. Army Public Health Center
Army Influenza Activity Report
Week ending 14 November 2020 (week 46)



U.S. Army Public Health Center

Army Influenza Activity Report

Week ending 14 November 2020 (week 46)



*2014/2015 influenza season - 2019/2020 influenza season